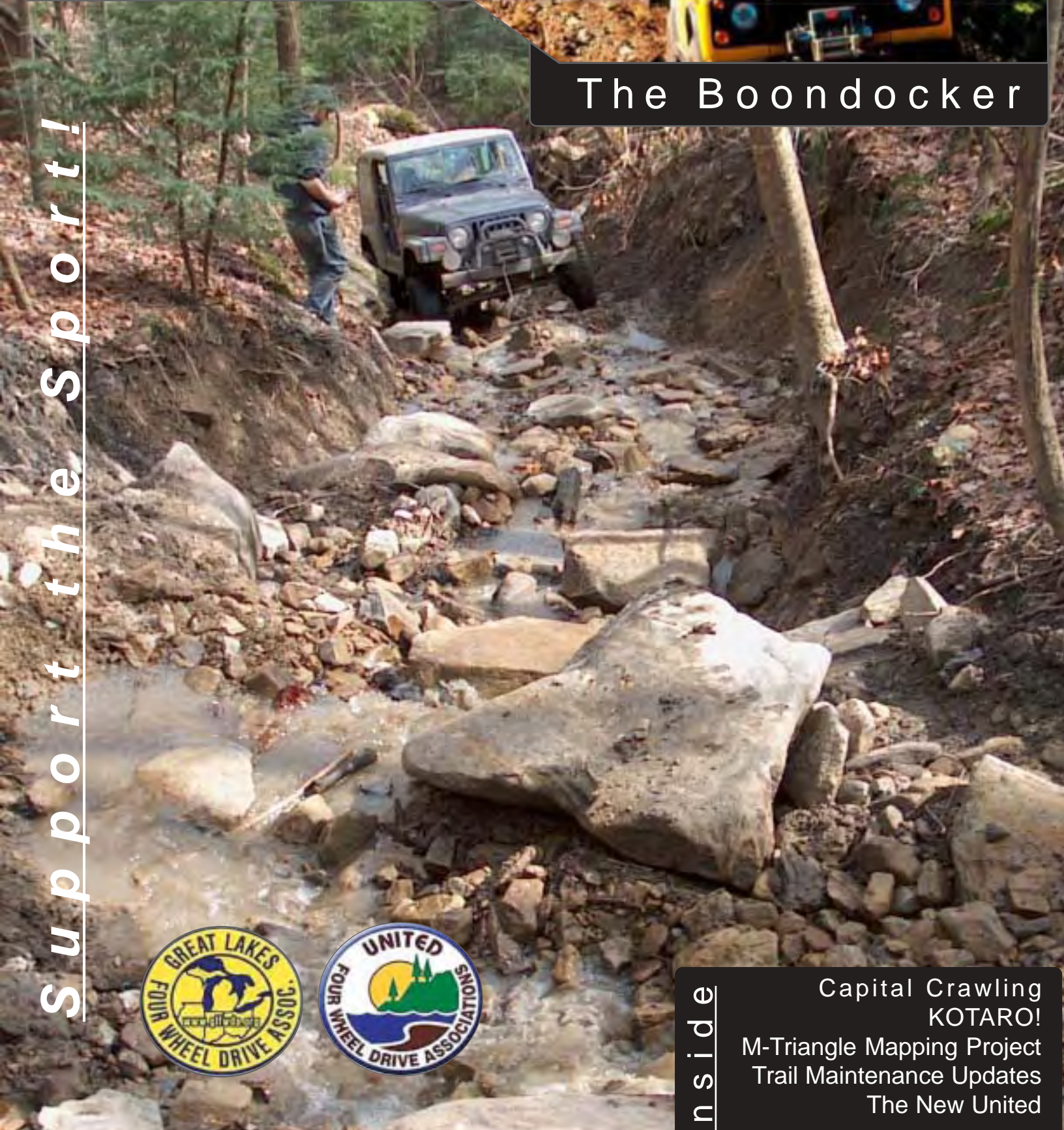


The Boondocker

Support the Sport!



Inside

Capital Crawling
KOTARO!
M-Triangle Mapping Project
Trail Maintenance Updates
The New United

Promoting and Defending Responsible Recreation

www.glfwda.org

summer 2007



Executive Board

President

Mark Burns
3833 Mildred
Rochester Hills, MI 48309
248-852-2234
president@glfwda.org

Vice President

Pat Brower
238 Elm St.
Fruitport, MI 49415
231-865-1345
vicepresident@glfwda.org

Correspondence Secretary

Jay Dolinski
11394 Kinloch
Redford, MI 48239
313-363-1688
secretary@glfwda.org

Treasurer

Paul Hittie
Freedman & Goldberg CPA's PC
2444 E. Hill Rd.
Grand Blanc, MI 48439
paul@freedmangoldberg.com

Membership Secretary

Bob DeVore
8390 Cappy Lane
Swartz Creek, MI 48473
membershipssecretary@glfwda.org

Advertising Rates

Full Page (1 side) – \$75.00 per issue
1/2 page – \$50.00 per issue
1/4 page – \$35.00 per issue
Business Card Size – \$15.00 per issue
Classified Ad – \$2.00 per issue

Great Lakes Four Wheel Drive Association

Great Lakes Four Wheel Drive Association Incorporated is a noncommercial association of four wheel drive enthusiasts organized for the promotion of interest in maintaining closer contact between four wheel drive clubs and individuals, to promote cooperation, friendship, conservation, ecology, and to preserve access to public lands through wise management policies. It shall also provide a network of communication in the event of disasters or emergencies, and for the advancement of four wheel drive awareness, the representation of four wheel drive interests in legislative affairs, and for maintenance of fraternalism by encouraging a high standard of conduct.

GLFWDA is an incorporated association, without capital stock, chartered under the laws of the State of Michigan, and is an exempt organization under Section 501(c)(7) of the Internal Revenue Service Code of 1986. Its affairs are governed by the Executive Board of Directors, whose voting members are elected every two years by the Directors of each member club. The officers are elected or appointed by the Directors. The Association is noncommercial, and no one who could gain financially from the shaping of its affairs is eligible for membership on the Executive Board.

A bona fide interest in four wheeling is the only essential qualification of membership; ownership of a four wheel drive vehicle is not a prerequisite. Membership is granted to anyone within the United States and Canada.

Membership Inquires should be directed to the Membership Secretary. Inquires of a general nature should be addressed to the Corresponding Secretary or a member of the Executive Board. Articles for publication should be sent to the Boondocker Editor.

UNITED FOUR WHEEL DRIVE ASSOCIATION

of USA & Canada
Kathleen Snyder
Office Manager
7135 S. PR Royal Springs Dr.
Shelbyville, IN 46176
1-800-44-UFWDA
Fax: 317-729-5930



Front Cover: Picture Mark Cocco,
Harlan KY

Back Cover: Picture Bernie Stanaway,
Tellico NC

Table of Contents

Capital Crawling	4
Calendar of Events	5
Stupid Name for a Jeep Club!	6
M-Triangle GPS Project	8
Great Lakes Visitor	10
Trailride Invite	11
KOTARO	12
Club Listing	14
Trail Maintenance Update	16
GL Store	17
Associate Membership Directory	18
The New United	19
Two Rivers Jeep Club Run	20
Quarterly Minutes April 2007	21
Boondocker Submissions	22
GLFWDA Membership App	23

GLFWDA Additional Contacts

Webmaster

Kevin Bentz
1627 Eureka Rd
Wyandotte, MI 48192
734-281-2366
webmaster@glfwda.org

4WD Awareness Training

Pat Kinne
2960 E. Ashby Rd.
Midland, MI 48640
training@glfwda.org

Trail Ride Committee Chairman

Position Vacant

Associate Membership Secretary

Kevin Bentz
1627 Eureka Rd
Wyandotte, MI 48192
734-281-2366
amsecretary@glfwda.org

Clothing and Decals

John Edwards
33370 Fairway Vista
Chesterfield, MI 48047
store@glfwda.org

Boondocker Publisher

Melanie Rice

Boondocker Editor

Lucas Gottler
34448 Jerome
Chesterfield, MI 48047
586-713-6779
editor@glfwda.org

Stories and articles are submitted from various Association Members. The views and opinions expressed in the stories and articles within are solely those of the individual, or individuals who submitted said stories or articles. Great Lakes Four Wheel Drive Association neither advocates, endorses, nor recommends any of the said views or opinions.

Boondocker Submissions

Please note that any submission for the next Boondocker should be made before **August 18, 2007** and be sent preferably via email to the Editor at editor@glfwda.org

You can send anything you feel is relevant. Pictures, articles, event dates, or even an entire article with pictures! Before you unpack from a trip, write up a story and send it in!

Capital Crawling

By Ari B. Adler (Zookeeper)

In the latest edition of The Voice from the United Four Wheel Drive Association, there are some startling numbers from legislative advocate Carla Boucher regarding investments and staffing levels for environmental groups in the United States. They show just how paltry the funding is for UFWDA and how pitiful the staffing levels are compared to the green movement.

Carla's report got me wondering about Michigan's political climate and how much influence the environmentalists have at the state level. Influence is the name of the game when it comes to getting something done by government these days – and at the state and federal level, influence comes with a price tag.

Generally, the more money raised the more money an organization can donate for supporting a candidate or helping to promote the success or defeat of a piece of legislation. This money is commonly funneled through a political action committee, or PAC.

One of Michigan's biggest watchdogs of political fundraising is the Michigan Campaign Finance Network. You can find a number of enlightening reports regarding election financing in various years by visiting www.mcfn.org. You also can sort through the raw data at the state's legal repository for such information, the Secretary of State's office (www.michigan.gov/sos).



I did a quick search at mcfn.org to see if any environmental groups were throwing their money around in Michigan for the good of their cause and, sure enough, a couple of green PACS showed up.

According to the Campaign Finance Network's Top 150 list for the 2006 election cycle, the Sierra Club had two PACS actively involved in supporting candidates and issues with their money. Number 37 on the list was the Sierra Club Michigan Chapter Political Committee, which raised \$226,990. At number 39 was the Sierra Club Voter Education Fund, which raised \$225,000. That's nearly half a million dollars from just one environmental organization being used to influence elections in Michigan.

You can see the Top 150 report at www.mcfn.org/final06pac150.php

I wanted to draw your attention to this issue because there has been some momentum lately on the various Jeep Web sites where people have been talking about banding together to support the sport. They've been talking about attending more meetings, joining GLFWDA, joining UFWDA, helping with events, etc. The important thing now is to not let the momentum fade before all that talk turns into action – specifically political action. Who knows, maybe we'd even see the birth of a Political Action Committee. Wouldn't it be something to see a 4x4 organization make that Top 150 list for the 2008 election cycle? Now that would be something to talk about!



CALENDAR OF EVENTS

July 14, 2007

Two Trackers Four Wheel Drive Club
Impromptu Trail Ride
See Flyer Page 11

July 15, 2007

GLFWDA Quarterly Meeting 9am
Dunes Waterfront Resort
1180 N. Shore Rd.
Mears, MI 49436
Phone: 231-873-5500

July 15, 2007 Quarterly Meeting Location



2007 GLFWDA Quarterly Meetings

July 15 Mears (Silver Lake)
October 7 Gaylord

ORV Advisory Board Meetings 2007

Visit www.michigan.gov/dnr for details

For last minute changes to events or for additional event information, visit the Great Lakes Four Wheel Drive Associations web site: www.GLFWDA.org. If your club wants to put a date on the Boondocker Calendar, just email the date with a description of the event and contact information to the Boondocker Editor at editor@glfwda.org



4x4 Parts & Accessories

--- Jeep --- Toyota --- Suzuki --- Trucks ---

OEM Parts
Custom Offroad Parts

Lift Kits
Tops

Winches
Transmissions / Transfer Cases

OVER 1.5 MILLION PARTS!

10% Off to all GLFWDA Members
For orders placed online
Use Promo Code: TP-GL6

Free Shipping
on all
Warn Winches

The Most Comprehensive Tellico OHV Trail Information Available

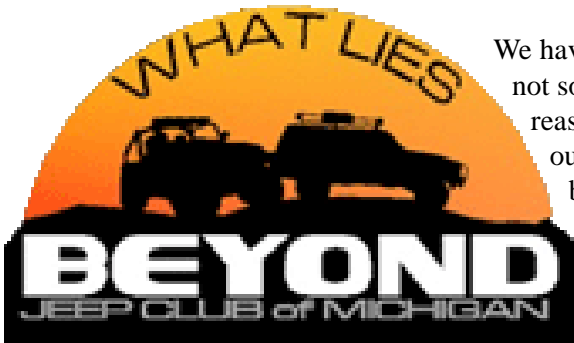
www.Tellico4x4.com

800-566-3646



What a stupid name for a Jeep club!

Actually, among ourselves the question of our name sometimes earns a PG-13 rating! “What Lies Beyond Jeep Club of MI” was formed in January 2006 with six initial members sitting in a cold garage trying to decide if we were going to join an existing Oakland county club, or form our own club in Genesee County. We ultimately decided to form a new club. That meant coming up with a new name and logo, but we had trouble finding something that wasn’t already in use. After much debate over a few adult beverages, the name stuck. Actually, it’s part of our sappy tag line: “Until you go, you’ll never know....What Lies Beyond”. After we started adding new members we decided to create a set of bylaws based on the model provided by GLFWDA, and the discussion again returned to the odd (?) name we had chosen and whether or not we should change it before committing to it long-term. As you can see, we kept the name, but not without a lot of late night discussion, e-mails and private messages.



We have since grown to more than a dozen members – some new to off-roading, some not so new, and some old salts. Many of us have small children, which was one of the reasons we stuck together in the first place. We camp with our kids and wheel with our kids, and try to keep everything we do as family-friendly as we can. One of our biggest challenges on the trail is keeping track of which kids are riding in which vehicle, since they tends to hop around like fleas on a hot griddle.

Our 2006 events included a trip to Silver Lake, a trip to Drummond Island, numerous trips to the Mounds (we all live within a 30-minute drive of the Mounds), and a Christmas Party complete with pizza and a gift-exchange for the kids. This year, we are again returning to Silver Lake (June 22-24) and Drummond Island (August 17-19). We all spent plenty of time fixing the wear and tear on our Jeeps from too many Mounds trips last summer, so we will probably spend less time there this year. We have added a new event this year, a 4x4 Show & Shine event to be held in July 2007. We will post more information on the Association’s website as we firm up the details. The newest addition to our club calendar is trail maintenance. Along with several other GLFWDA clubs, we decided to adopt some of the miles the Association has committed to through the DNR trail maintenance grant program. What Lies Beyond adopted the Mio Route, and completed our first round of maintenance on April 29.

What Lies Beyond voted to require GLFWDA membership for our members at our April meeting, and was added to the list of GLFWDA associated clubs at the spring quarterly meeting. Thanks to Bob Devore (Jarhead) and Jim Kitson (White Rhino) for making the trip out to one of our monthly meetings to discuss the benefits of being GLFWDA members.

See you on the trails!



www.4WheelPartsCleveland.com

PARMA
10865 Brookpark Rd
(216) 267-6668

STORE HOURS:
M, T, TH, F (9AM-5PM)
WED (9AM-9PM)
SAT (9AM-5PM)

**If you own a Jeep®, Truck,
or SUV we are all you need!**

- Guaranteed Low Prices
- Unmatched Service
- ASE Certified Technicians
- Unsurpassed Warranties
- 45 Years in Business
- Over 50 Stores to Serve your Needs

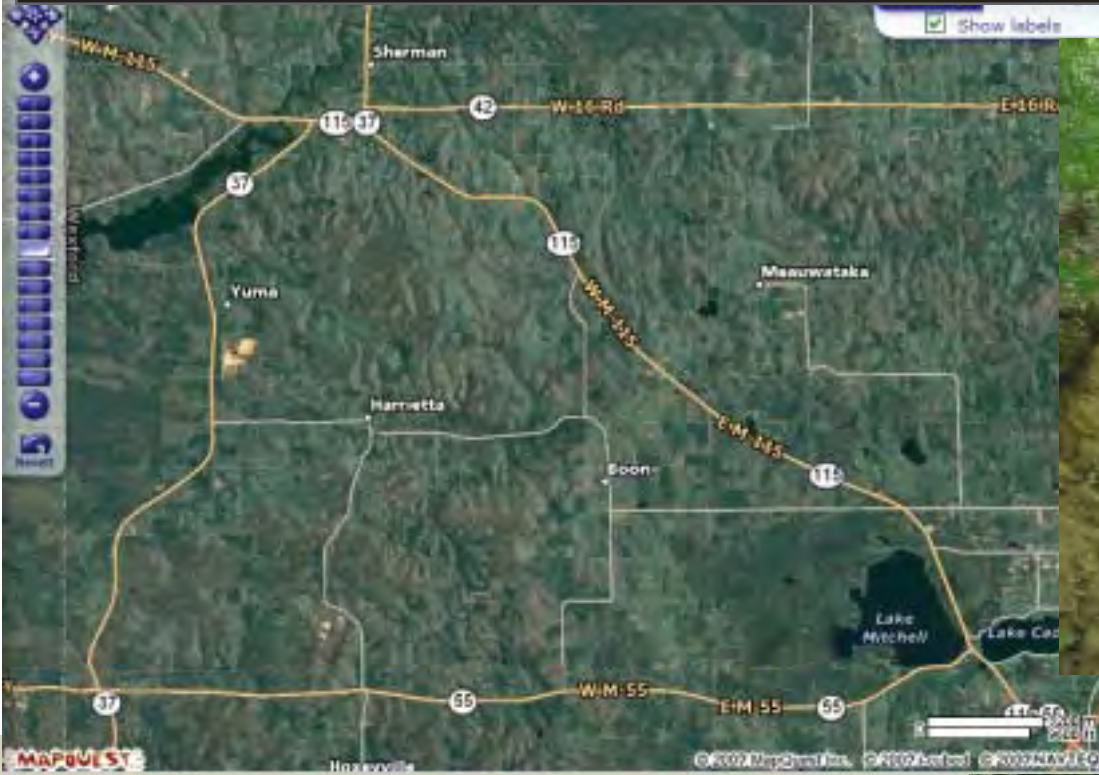
Attention Club Members!

Join our Club Program for Extra Discounts

- Have your club meetings at our store.
- Receive one night of special pricing for your club.
- We provide the food.
- We provide the drinks.
- Free T-shirts for your club!!!
- Chairs, tables provided for your club.
- Extra promo material available for your club events.
- Receive money back on your clubs purchases for your clubs events.



GPS Trail Recording for the M-Triangle Project



By Bruce Rettig [GreyBeard]
Photos by Bruce Rettig and Jim LaVallee

Memorial weekend, several of us began the process of mapping the M-Triangle project area. The M-Triangle is an area just West and North of Cadillac Michigan. It is bounded by three Michigan routes: M-55, M-115, and M-37. These roads are all fairly straight in this area, and hence define a triangle.

Pat Brower had put out a request for some assistance in mapping the unpaved trails in this area with GPS so they could be considered for inclusion in the Motor Vehicle Use Map that is being created under the Travel Management Rule.

Pat gave everybody a briefing on what it was all about and how to properly set the GPS units to capture the desired information. We departed Burke's Waterfront Restaurant in Cadillac with three Jeeps following Pat and Connie's Cherokee. We split into two teams to cover more territory. Matt K and his TJ filled with two couples followed me, and Jim LaVallee in his ZJ Grand Wagoneer teamed up with Pat and Connie.

I managed to talk Jeremy into leaving the companionship of all the others in Matt's vehicle and coming to ride with me in my four door JK. Jeremy took written notes for a few hours as we searched for and explored the unpaved roads and trails.

We had an agreed time and place to meet and compare notes. As it got closer to the appointed time, I decided to stop exploring trails and head to the designated location. Well, sometimes that is not as easy as planned when in an unfamiliar area. I thought we were going to be on time, but ended up about a half hour late. We met by a radio tower and observation deck. The view from the deck was impressive.





Matt B. and Ioan L. ultimately arrived with their JK's. Matt K. and his crew headed off for a previous commitment, and the reconstituted group continued the trail logging.

The overgrowth on some of the trails did make it difficult to keep a magnetic mounted CB antenna in place, even though it was right in front of the windshield. When we finished with one stretch, the antenna base was dragging along the ground, and the antenna was missing. Jim loaned me a spare that he was carrying, and that supported my communication for the remainder of the trip.

On Sunday morning, we were joined by Jeff VanderSloot of the Two Trackers. I noted with interest that his CB antenna was well protected in the middle of the bed of his pickup.

Once again, we split into two teams and continued the logging activities.

Our mid-day rendezvous was at the Boon Grocery in the little town of Boon. If you need something in Boon, they

probably have it. It is a tiny little place with meats, home made sandwiches, lotto, beverages, miscellaneous hardware, motor oil, brake fluid, trailer parts, and a gas pump out front.

We mapped a number of miles this weekend. We found items some of the GPS maps said were foot trails that were actually signed as seasonal roads and also marked for snowmobile travel. We found regularly traveled two tracks and single lane roads that did not show on the GPS maps at all. We found roads that the maps showed as complete that actually terminated (for our purposes) at private property boundaries.

The trip provided the opportunity to try out a new and improved approach to gathering the GPS logs. I had built an overhead rack that bolts into my JK to handle the electronics that I always seem to take along. This included my CB, my GPS unit, and a laptop to provide serious mapping and data logging. It worked great except that if I closed the laptop, it went into standby mode. A temporary Velcro strap provided the solution to get through the weekend. A better solution is in the works.

There is still a lot to record and validate. There is a lot in the M-Triangle, and there is a lot more around the state. If you are interested in helping, please contact Pat Brower [trail_fanatic@hotmail.com].



Pat has the NOHVCC (National Off-Highway Vehicle Conservation Council) DVD that tells you all about how to set up your GPS to record the trails and how to submit the data. If you don't have a GPS, don't let that deter you. Those with a GPS unit still need company, and it is always a good idea to take another vehicle with you if you are unfamiliar with the area and what you may run into.

Epilogue:

On the way home, Jim's left rear wheel just didn't look right. It seemed to be vibrating at times on the highway. I gave him a call on the CB and he acknowledged that it "felt a little funny". When he pulled over, two of the lug nuts were gone and the others were pretty loose. Thank goodness we got it tightened on and added a lug nut before the wheel came off.

I don't know what it is with Jim and left rear wheels. When he took his big YJ Yoooper Jeep to Gitchee Gumees last year, he had another left rear wheel incident. While driving on pavement on the way to the trail, his wheel actually came off and passed him on the highway.

Carla Boucher Visits Great Lakes

Great Lakes Four Wheel Drive Association was pleased to host United Four Wheel Drive Association's Attorney, Carla Boucher, at their quarterly meeting in Mears, Michigan on April 22nd, 2007.

Carla's wheeling background makes her the perfect advocate to fight for and protect the rights of four-wheel drive enthusiasts. There are many attorneys in this country that will take up virtually any cause for a fee. Having an attorney who truly believes in the cause is a very rare commodity. United and its associated members are fortunate to have Mrs. Boucher in their corner.

The message of Carla's presentation was very clear. United Four Wheel Drive Association is being forced to look at individual membership and a significant dues increase in order to continue fighting for land use rights.

This sober message was delivered with supporting facts and reasoning. Carla explained that a portion of the proposed fee increase is to be allotted to hire professional employees to staff United.

Carla discussed several victories that have been achieved in various states over the past year. Carla also discussed how a victory for land use in one state sets the precedent for land usage issues in other states.

GLFWDA's Vice President, Pat Brower, outlined the countless hours of conversation he personally has had with Carla over the phone and in emails, as she has offered invaluable advice on procedural issues and suggestions regarding how Great Lakes can most effectively deal with the issues it is facing.

The consensus at the close of Mrs. Boucher's presentation is that it is in the best interest of Great Lakes Four Wheel Drive Association's members to support the individual-based membership and dues increase as proposed. Failure to support this initiative will be a devastating blow to wheeling in this country, and could very well be the beginning of the end for the sport we enjoy.

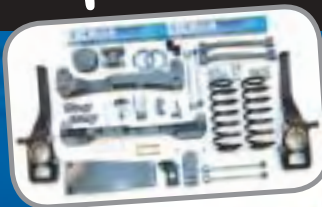
GLFWDA would like to extend their sincere thanks to Carla for taking precious time away from her family to educate the GLFWDA membership regarding the proposed changes in United. This visit also speaks volumes about the willingness of United Four Wheel Drive Association to reach out to its members to offer support, education and encouragement in the pursuit of common goals that benefit wheelers across this nation.

Melanie Rice

BDS

SUSPENSION

It's a Jeep Thing!



**Grand Cherokee WK
4" System**



**Grand Cherokee XJ
6.5" Long Arm**



**Grand Cherokee ZJ
6.5" Long Arm**



For your nearest distributor visit
www.bds-suspension.com

102 S. Michigan Ave
Coldwater, MI 49036

Quarterly Impromptu Trail Ride

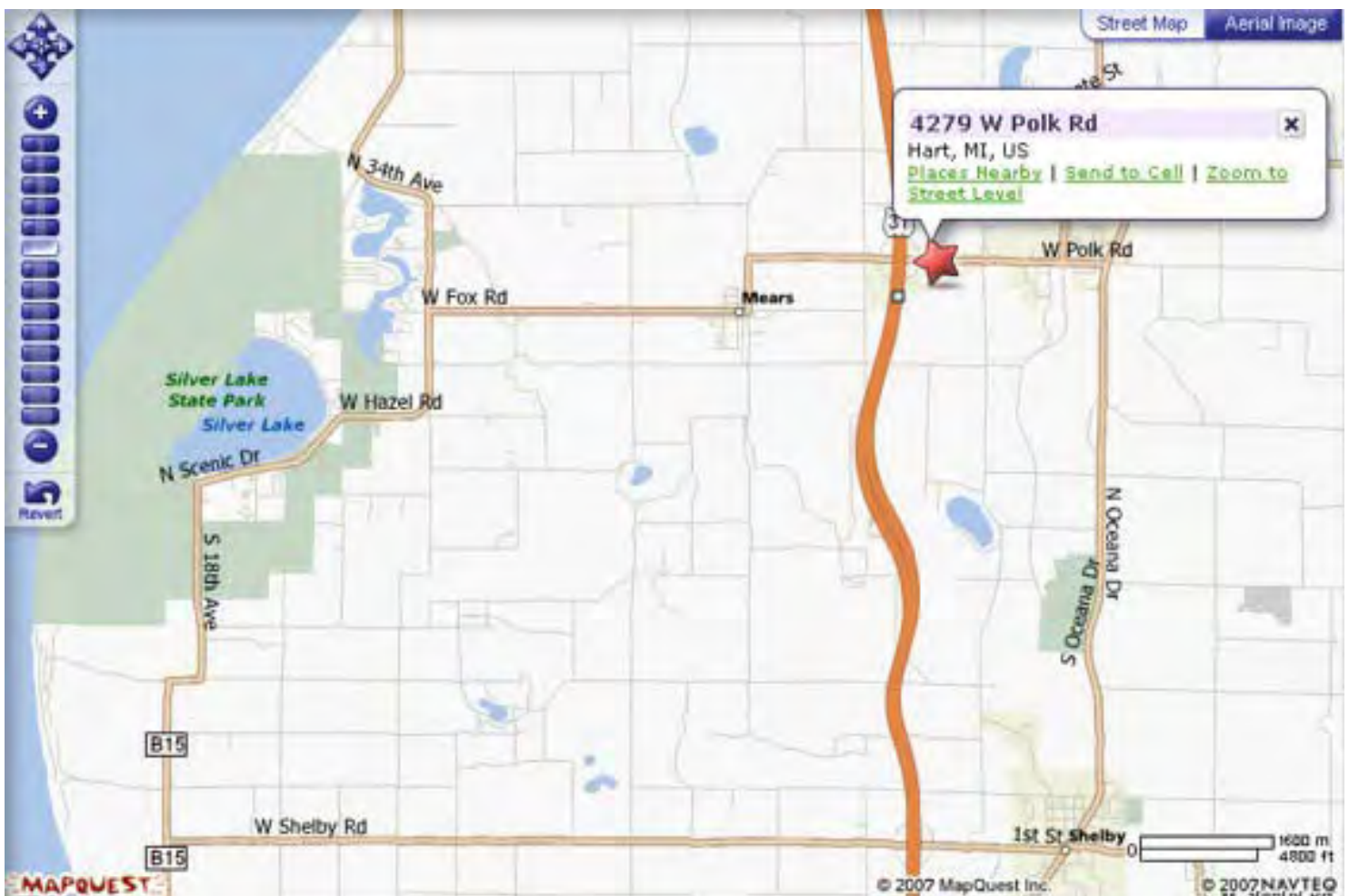
The Two Trackers Four Wheel Drive Club, Inc. out of Grand Rapids has invited GLFWDA to join them on Saturday, July 14th for a trail ride through the Manistee National Forest. Due to logistical constraints of the event, we are forced to limit GLFWDA participation to 20 vehicles. If you are interested in attending, RSVP Pat Brower no later than July 7th (one week prior to the ride) at Trail_Fanatic@Hotmail.com. If you are unable to register by the deadline and would like to attend, please feel free to check with the Trail Leaders at the Driver's Meeting for space availability. Without registration, your participation cannot be guaranteed.

The day will begin with a Driver's Meeting at 9:00am at the Hart Expressway EZ Way Convenience Store/ Gas station, 4279 W. Polk Rd., Hart. This is the station on the SOUTH side of Polk Rd on the EAST side of the US31 – Hart/Mears Polk Rd. (Exit Ramps Across the street from McDonald's). While final Route determinations are still incomplete, the majority of the run is set. It will consist of a variety of National Forest Roads and County Seasonal Roads. The Route will be passable by stock 4x4 vehicles but will require the use of 4WD. National Forest Road Maintenance Level Two Roads are NOT maintained to a width or height requirement. If you have a quality paint job, I recommend a quality coat of wax to protect it on some of the trails.

A very large portion of the area we will be riding through has already been slated for closure by the NFS. Baldwin District Rangers have told us to enjoy the trails while we are still able. I was hoping to be able to show all of you one of the better areas I grew up exploring; before the closures affected the overall integrity of the 4WD portions of the 'system' that was there. Fire Tower Hill was still open when this run was scheduled, but has been closed since early May. You will still receive a high quality trail riding experience (I think the trails are *far* better than the State ORV Routes), but we must now include some portions of maintained roadway during our outing and you will need an SOS licensed vehicle for participation.

Hope to see you there!

Pat Brower



KOTARO

Keep Our Trails And Roads Open

One of the biggest undertakings the executive board has taken on is what we have come to call KOTARO (KOTARO stands for Keep Our Trails And Roads Open). We have sent out a broadcast e-mail to all registered users on our GLFWDA.org web-site. Knowing not everyone is tied into cyberspace and the forums, we will reproduce it here. We need all the help we can muster and it is flexible enough to meet your budget and your individual time frame.

Why KOTARO, please read on: In November 2005 the U.S. Forest Service was directed to create a designated system of roads and trails on all national forests and grasslands. This process is a part of the Travel Management Rule. The Travel Management Rule allows for public collaboration in identifying and recommending those routes for designation. You need to be aware that this process is not uniform from forest to forest. The Travel Management Rule culminates in a Motor Vehicle Use Map (MVUM). The MVUM will be derived from the agencies baseline existing roads and trails. There are at least two ways for the agency to arrive at the publication of this map. The first approach allows the forest to use existing decisions involving routes that remain open to create the MVUM; placing them in full compliance with the Travel Management Rule. The second approach allows the forest to use GPS to add important historical roads and trails to a data base roads so they may be considered for future designation.

For our purposes, the most important approach involves the second approach. We are seeking volunteers for two types of participation at this time. The first type is the creation of GPS data information on existing, historical roads and trails that do not appear on the agencies baseline inventory of roads and trails. Your role, as a volunteer in this instance, is to help build this database so that the routes identified by you, although not currently open, may be considered in future travel management decisions. In short, we are creating an undeniable record that these routes existed, were used, and should be considered for designation in the future.

The Hiawatha and Huron-Manistee National Forests are NOT going to open the process to public comment. Because they have been closed to cross country travel for twenty years and have a current transportation system, they are going to publish their baseline map as the 2008 MVUM. The decision not to have a public comment period is in contradiction to how the MVUM scenario was sold to the public. This issue is being addressed separately. It is required that the MVUM be reviewed annually. We will submit our data, just not until the

review process in 2009. That means 2008 will begin a year of almost NO legal trail riding on the Hiawatha and Huron-Manistee National Forests. We need your help in collecting the GPS Data now, while we can still legally travel via our vehicles in the collection process: before we are forced to walk each trail or to be considered in conjunction with the development of the new Travel Management Plan. As you can see, these trails and routes you identify can be open as a part of the plan.

The second role that you can play involves participation in active Forest Travel Management planning. The Ottawa National Forest is a prime example of this approach. Although the Hiawatha and Huron-Manistee National Forests will go directly to the publication of the MVUM, forests like the Ottawa will be open for GPS data information to be considered in conjunction with the development of their new Travel Management Plan. The routes you identify can be open *as a part of the initial MVUM*.

Now that you have a basic understanding of why GPS data on roads and trails is critical to collect, allow me to introduce you to the KOTARO Team concept.

KOTARO stands for Keep Our Trails And Roads Open.

This letter is to start the creation of these teams. The intent is to cover all Forests in Michigan. After several meetings with the Forest Service, we have derived a system and format in which the Forest Service will accept this information.

Volunteers are needed for the KOTARO Teams across the state. Ideal candidates will possess some of the following:

- Knowledge of the majority of trails in a specific area; historic knowledge is a plus
- How to read the latest Forest Service map to see where the gaps in data occur
- Know how to use a GPS to gather trail information
- The capability to gather the needed information by legal means if a road or trail is non-motorized route (ex. by foot, horseback, mountain bike, etc.)
- Utilize the NOHVCC educational DVD provided by NOHVCC, at no cost, (also available from the GLFWDA Land Use Committee) to learn the procedure
- Include audio or written detail support of the GPS routes as stated in the DVD
- Know how to download that GPS information in the format required and transfer it to the person collecting it for preparation for the Forest Service

Most of the communication in this process will take place via the computer.

If you have not already received the training DVD, you can order it by contacting the NOHVCC (National Off Highway Vehicle Organization) at 1-800-348-6487 or e-mail them at trailhead@nohvcc.org.

As a KOTARO Team member you will be heavily involved in the process of collecting route information and partnering with the local ranger district. Partnership and collaboration are the keys to making this a successful project and it will be critical in every step to ensure that all parties involved understand what will occur, how it will occur, when it will occur, and where.

To help with the KOTARO Team project, please choose which region or riding area you can cover and learn how to prepare your information for the person that will be organizing it and sending it to the Forest Service via e-mail (again - view the DVD for details).

If you are interested in becoming part of the KOTARO Team project and can provide this service, please contact the KOTARO Team project managers ASAP so we can start the process. The KOTARO Team project managers will coordinate the collection of trail and road data, and assist in keeping as many miles of roads and trails open in Michigan.

Regards,

KOTARO Team Project Managers

Pat Brower
landuse@glfwda.org

Bob DeVore
membershipsecretary@glfwda.org



KOTARO Team Screening Questionnaire

Name: _____

Email Address: _____

Phone: _____

Address: _____

National Forest(s) and Ranger District(s) of Interest: _____

Type of GPS Unit: _____

Level of Experience with GPS: _____

Mapping Software Used: _____

Do you know what ephemeris data is, and how to obtain it? _____

Internet Connection - dialup or broadband? _____

Availability (Do you have a day job, or are you retired? Can you gather GPS data on weekdays?) _____

Do you have an affiliation with a club? _____

If Yes, which club? _____

GLFWDA Club Listing & Contact Info

1. **Flintstones**
Member since 1975
Director: Rich Nowak
1339 S. Vasser, Davison, MI 48423
2. **Golden Triangle**
Member since 1978
Director: Darrin Buss
13155 Waters, Chelsea, MI 48118
3. **Jackson Stump Jumpers**
Member since 1972
Director: Brad Perkins
5614 Larch, Jackson, MI 49201
jacksonstumpjumpers@hotmail.com



4. **Mid-Michigan Fourwheelers**
Member since 1990
Director: Ron Roggow
4125 Roosevelt, Hemlock, MI 48626
5. **Mud, Sweat, and Gears**
Member since 1987
Website: www.msg4x4club.com
Director: Tim Yocum
tim.yocum@koltanbar.com
6. **R.P.M. Off Road**
Member since 2002
Director: Steve Kitchen
P.O. Box 347, Evart, MI 49631



7. **SoFO - Michigan**
Member since 2005
Website: sofo.glfwda.org
31026 West Chicago
Livonia, MI 48150
734.776.6072
sofomich@gmail.com
8. **Tri-City Trail Riders**
Member since 2003
Director: Steve Gradowski
1634 Hotchkiss Rd
Freeland MI 48623
nvrenuf@gmail.com
9. **Troll Fourwheelers**
Member since 1993
Website: www.trolls4wdclub.com
7200 Bunker, Indian River, MI 49749
nephd@blazeconnect.net



10. **What Lies Beyond**
Member since 2007
Website: <http://www.whatliesbeyond.org>



For contact information changes,
please email the Editor at:
editor@glfwda.org



M-F 10am-7pm
 Sat 10am-3pm
 Closed Sunday

1627 Eureka Rd
 Wyandotte, MI 48192
 734-281-8141
 888-281-0681
 FAX: 734-281-2841
www.jeeperz-creeperz.com
sales@jeeperz-creeperz.com



These over built tubular fenders were designed for maximum suspension articulation while still maintaining an inner fender liner. Tough .120 wall tube is attached to 1/8" steel plating for one tough fender design. RRC Tubular Flat Fenders are direct factory replacements with a built in full fender liner allowing for all factory engine accessories to be mounted by using the factory mounting hardware or a non-factory inner liner that requires some drilling to re-locate the factory components.. These fenders cover most tires, they are designed for offroad use and additional flare coverage may be needed for on-road use in some states. Bolts on directly using the factory inner liner, has ground welds, does not include side marker light bracket, does include turn signal bracket and is ready for paint. **Introductory prices start at \$379.95/pair!**



DANA 60 COMING SOON!

HEAVY DUTY DIFF COVERS!

- # Indestructible! You won't break this cover. We guarantee it!
 - # Made of 3/8 inch cast steel, painted black inside and out, this heavy duty cover is designed to protect your differential and all its working parts for as long as you own your vehicle.
 - # These indestructible covers have been ".44 caliber tested"-If they can take a bullet at point blank range, they can take all that the trail has to offer
 - # Available for the most popular Dana differential types and include extra reinforcement for the fill plug area
- All include mounting hardware and instructions for ease of installation. **\$96.95 EACH**



Available in 9,500 or 12,000 lb versions for \$1259.99

Introducing the most versatile winch ever created, the PowerPlant Dual Force from WARN. This remarkable winch combines a top of the line air compressor and WARN winch all in one unit. This winch/air compressor combination gives the user the ability to inflate tires (four 35" tires in under 8 minutes), power air tools, inflate recreational items plus have the ability to recover a vehicle when necessary! The HP model has a 9,500Lb line capacity, 125' of wire rope making it great for off road enthusiasts. The HD has a 12,000Lb line capacity, 80' of wire rope and a longer duty cycle making it ideal for contractors, farmers and ranchers. All units feature a 4.6hp Gen II motor; a premium air compressor with high flow ratings and 100 psi max pressure switch and an on board 1/2 gallon air reservoir with built in inter cooler. Included with each PowerPlant tm is 25' of coiled nylon air hose, a hand held control with thermoelectric LED, quick-connect couplers, tire gauge and dual air chuck.

Visit us on the web at WWW.JEEPERZ-CREEPERZ.COM
 Use Discount Coupon Code "GLFWDA" to get a discount!

Prices good at least through June 30th, 2007.

GLFWDA Trail Maintenance Update



So far, so good. We got a late start to our spring maintenance schedule this year, but we covered all of our miles at least once prior to the Memorial Day weekend. The members of SoFO and What Lies Beyond tackled route miles that had been maintained by other organizations in the past. SoFO has adopted the ORV routes in the St Helens and Ogemaw Hills areas and WLB worked the Mio Route. Part of the challenges faced by these clubs was often just finding the route in the first place, since what is on the ground often does not match the available DNR maps. The other challenge they faced was being trail maintenance newbies. Fortunately, a number of Association members, including members of SoFO and WLB, attended the spring Trail Maintenance Workshop provided by the DNR in Lansing (there were also 2 other workshops in other parts of the state). That gave us an opportunity to hear first-hand from the DNR what the requirements are, discuss some common issues with the cycle and ATV folks who were also in attendance, and to meet the DNR trail technicians with whom we will be working on an ongoing basis.

The Tri City Trailriders took responsibility for the North Branch Route and completed it without any significant problems other than a rumor that they created a bio-hazard by feeding a whole new generation of mosquito larvae their precious blood. In fact the bugs were bad everywhere this year, maybe an argument for us to get out in late March or Early April next year while the little critters are still frozen.

Bruce Menning (aka brewmenn) led an all-star cast of indie members, Executive Board members, and other miscellaneous Association members to Atlanta to work the Elk, Brush Creek, and Tomahawk Routes – some 70+ miles in all. Bruce even managed to sign up a member on the spot after finding a willing accomplice on one of the internet forums, which was a good thing since they needed all of the help they could get. Turnout was a little thin in Atlanta, with only 6-8 people working each of the two days. Please contact Bruce if you can lend a hand in the fall.

As always, thanks to Paul Mulder & Melanie Rice for taking time to do most of the sign work on the areas we are responsible for, and for providing guidance and direction to some of us who are still a little wet behind the ears in the trail maintenance business.

Paul Hittie



Great Lakes Store: Clothing, Gear, and More!

Order Online @ www.glfwda.org/store/



T-Shirts \$12



Tank Tops \$12



Winter Hats \$15
Baseball Caps \$12

Also available: Sweat-shirts,
Long Sleeved Shirts, and more!

Be sure to specify mens or womens and the size of clothing when ordering. Most clothing sizes are available from Medium up to 3XL.

Special Order items also available: Jackets, Hoodies, Etc... Custom Lettering Available for most articles. Contact our vendor directly for custom orders @ www.feemb.net or contact the Store Manager for more information.



Endangered Species
Stickers \$3



4" or 6" GLFWDA Stickers \$1

Store Manager
John Edwards
33370 Fairway Vista
Chesterfield, MI 48047
store@glfwda.org

Associate Member Directory



4WHEELPARTS Cleveland

10865 Brookpark Rd.
Parma, OH 44130
(216)267-6668 (216)267-5737
www.4wheelpartscleveland.com
CLE@4wheelparts.com
Contact: Sean "Chubby" Campbell



BDS Suspension

www.bds-suspension.com
102 S. Michigan Ave.
Coldwater, MI 49036
517-279-2139



Jeeperz Creeperz

www.jeeperz-creeperz.com
1627 Eureka Rd., Wyandotte, MI 48192
734-281-8141 or Fax 734-281-2841
sales@jeeperz-creeperz.com
Contact: Kevin Bentz



Tellico4x4.com

www.tellico4x4.com
800-566-3646
256-757-5885
sales@tellico4x4.com



Ultimate Air

www.ultimate-air.com
P.O. Box 0088, Allen Park, MI. 48101
313-595-5358
Contact: Brian Wysocki
sales@ultimate-air.com

THE NEW UNITED

Doug Saul, Individual Member GLFWDA and GL Delegate to United

The process of re-formulating United has been going on for the past few years. It has seemed to mirror some of the changes we have experienced within Great Lakes. As a long time member of both the GLFWDA and the UFWDA, I have seen both Associations struggle with change to an Individual based organization. The club and association based structures previously utilized were restricting the need for “faster paced change” for the organizations to respond to the directions of the members and advancement in communication technologies.

I hope you read some of the articles in the latest issue of United’s VOICE. The Secretary’s report touched on some of the items to be considered by the United Delegates at the Annual General Membership meeting in Grand Junction, Colorado, in July. Many of the items were covered in greater detail on the two pages of Frequently Asked Questions (FAQ). If you have additional questions, please log on to the United website www.ufwda.org, go to the Forums and post them for the United BOD to respond to. On page 14, information about the Proposed Bylaws to be considered at the United Convention is shown, along with a list of items to be presented to the Delegates for voting.

Great Lakes participated in two webinars held by United in February and March this year. This was a GREAT way to present important topics to the Delegates and allow for interaction from the participants. The opportunity was provided by United for input, but not all Organizations chose/were able to participate. This year the United BOD has tried very hard and succeeded in communicating with the Delegates throughout the year. This was one important item the United BOD was tasked with accomplishing during the AGM meeting in 2006 in Tennessee.

Obviously, the Great Lakes BOD has been reviewing and commenting on this material, within Great Lakes and with our contacts within United. If you have comments/suggestions/questions regarding how GL should respond/participate on these United topics, please contact your Great Lakes BOD or post it up to the GL Forum. I know I will be looking for some direction from the GL BOD for voting on some of the items to be considered at United, in July.

We are all in this together to “Support Our Sport”, whether at the state level or at the national/international level. Thanks for your continued support of Great Lakes and United! See ya on the trails.



2007 Two Rivers Jeep Club 4X4 Safari @ Pittsfield, IL



Pictures Submitted By: Doug Saul



GLFWDA Quarterly Meeting Minutes, April 2007

I. Call to Order: 9:30am

II: Guests: Jack Warfield with Sandy Corners is in attendance.

Carla Boucher (Legal for UFWDA) introduced herself to the attendee's and gave a brief overview/history of UFWDA. She gave a brief discussion of the bylaws changes to possibly take effect. Budget constraints had become an issue and the UFWDA determined that a change was necessary.

III: Approval of Minutes – Motion to approve

IV: Pres. Mark Burns – The Boondocker is again a good voice of GLFWDA. Brower has been busy with changes. Continue the involvement of attending the Trail Maintenance Workshops in Lansing. Asked everyone to use the Tailgate Report for use of Funds to show the DNR that 'does not believe' that communities (within Michigan or even out of state) do not benefit. Vehicle Awareness Training may begin. Encourage others not in the association to also fill them out & submit them. Use the provided cards to "tell me what you want".

V: VP Pat Brower – I'm still feeling out the position and land Use has always been my niche.

VI: Sec. Jay Dolinski – I'm getting settled in and learning how the Org. works.

VII: Treasurer – Paul Hittie – We are in the black and have some Trail Maintenance reimbursement.

VIII: Mem. Sec. Bob DeVore – As of January we had 198 members, we now have 230 members. 500 decals have been ordered for Welcome packages.

IX: Assoc. Mem – Kevin Bentz (not in attendance) - 5 of 8 Associate members have renewed, 3 have lapsed.

X: Boondocker – Lucas Gottler (not in attendance) – The 2-car garage is now complete and ready to be broken in. Send in your stories and articles.

XI: Land Use Report:

Huron Forest Manistee plan is ready to be finalized. Plan Appeal has yielded a victory. The H-MNF will now have language in its Plan to support the designation of 72" width 4x4 Trails. Trail maintenance and construction funding is at a surplus while Road maintenance funding is backlogged by millions of dollars and road construction has been eliminated. This will make it MUCH easier to get two tracks redesigned and kept OPEN. Please contact Pat Brower about this.

M triangle: NFS Project to designate Michigan's first 4x4 Route. 4x4 Routes will be used for 4x4 vehicles only, not bikes or quads.

State Issues: Advisory Board Meeting – GLFWDA Land Use Committee has procured a seat on the Advisory Board's Sub-Committee to Develop a Long-Range (10year) Spending Plan for the \$6 million

surplus in the ORV slush fund. The Advisory Board Chairman, Dick Ranney, suggested writing in \$50,000 "or so" per year for Rock Crawl Development and Construction.

GLFWDA Land Use Committee member and GLFWDA Treasurer, Paul Hittie has graciously accepted this position for the Association.

NOHVCC – Software is being distributed to better standardize the logging of GPS tracks. This will allow for easier transfer with Governmental Agencies

XII: Trail Ride Committee: Lucas would like to have "Gitchee Gumee 2007" on a much smaller scale. No registration, no stickers, no clothing, just wheeling. It will be the same time frame as last year, from Sept. to Oct.

XIII: Old Business:

- a.) Insurance – Everything is up to date with it.
- b.) Trail Maintenance Dates:
 - i.) St. Helen - April 19th
 - ii.) Mio - April 29th (meet at McDonald's off of M33)
 - iii.) Atlanta – May 19th & 20th
 - iv.) Ogemaw May 19th

Thank you for attending the Meetings in Lansing. The Gov. has tried to enforce a freeze on grants. Paul Mulder will be the sounding board in terms of signage. We do need to keep up the signage, and in the best of shape.

XIV: New Business:

- a.) GL Clothing – Pat Kinne will no longer be running the store that has been assumed by John Edwards.
- b.) Turtle Ridge – Steve Walker would like to put on an event in Drummond. He would front the insurance.
- c.) Awards: SoFO – Awarded the Most Active Club in GLWDA. Also, Mudchuggers won the Jack Edwards Award from UFWDA.
- d.) Grayling Air Show – It is an Inaugural event. July 7th and 8th will be the weekend of the event. Bob DeVore has reserved eight rooms at the Holiday Inn for a discounted price.
- e.) UFWDA Convention Delegate Selection – Doug Saul and Pat Brower are the two delegates selected.

XV: Club Reports:

- a.) SoUPy is going to come up in June. This will be an invite only run put on by SoFO.
- b.) Mud, Sweat and Gears "Easter Egg Hunt" was a success. The form will be submitted for DOA soon. The DOA run will be running around August 24th.

XVI: Associate Member Reports:

- a.) Ann Arbor Driveshaft – We need more Boondockers, they are gone within a week of Receipt.
- b.) "Big Brothers, Big Sisters" run. Briefly talked about it. More discussion with the Sundowners club to happen. They currently do this & we would like to copy their format if possible.

XVII: Update on the next Quarterly: July 15th, at Mears (Silver Lakes).

XVIII: Adjournment: 12:35pm

Boondocker Submissions: A How-To Guide

First, thanks to all the members of GL that send in articles, stories and pictures. It makes my job so much easier when I have a selection of material to work with when the time comes to assemble The Boondocker.

There are a few things that make my job easier and make this publication look better. First are the stories and articles from you! Please take the time and write up a few words about your weekend adventure, the meeting you attended, or the trail cleanup you tagged along with. A paragraph or two about your activities for and with GLFWDA can be a spark for another member to help out more, or for another to try something new!

Pictures are worth a thousand words. Please keep them coming! If I don't use them now, the next issue might have the perfect spot for it! Remember, the higher the resolution of the pictures, the better they will look printed and the better chance they will have at gracing the front cover (or back!).

General Rule of Thumb for Submitting Materials:

Stories: Unformatted text works best. *Standard New Times Roman or Arial fonts without colors or bullets.* Please don't embed pictures into the stories, but if a picture would work best next to a particular paragraph, add it as follows: ((IM00076.jpg)).

Pictures: High resolution is the best. For simplicity, the size of the pictures file seems to be the easiest judge of picture quality. For standard pictures for your article, a size of **200kb-600kb is fine for a decent quality image** at print time. If you want to have a chance at a cover appearance, **800kb is the minimum size file** I would suggest. Types of picture files? Typically JPEG files are standard for cameras, but I can open just about any other file such as TIFF's, BMP's, GIF's etc... Not sure still? Try opening the picture up on your computer and zoom in to full screen, if it looks good still, your resolution is acceptable, if it starts looking grainy or blocky, it probably won't make a good cover shot.

Please continue submitting stories! Click away on your next trip, write up a quick story, and email it to me with your pics at editor@glfwda.org



Size: 6 kb



Size: 918 kb





Why become a member?

In unity there is strength. Great Lakes Four Wheel Drive Association is dedicated to upholding the rights of citizens, and the continued use of public lands. Public lands belong to its citizens to RESPECT, to PROTECT, and to ENJOY. If you support these principles, your membership will add your voice to the millions of other recreationists who are striving to protect their rights and freedoms. GLFWDA believes, with firm conviction, in this right and this trust. GLFWDA believes that citizens have the right of access and to enjoy these public lands, by vehicle, as well as by other means. GLFWDA recognizes that citizens who use these lands, in return, have an obligation to uphold the trust – to respect the land, and so conduct their activities that the public interests are protected. We invite the cooperation of all in upholding the right of citizens to continued use of the public lands they jointly own.

We urge individual four-wheel enthusiasts to become members of Four-Wheel Drive Clubs, or to form new clubs, and to affiliate with the Association. We invite the support and participation of related businesses as Supporting Associate Members of GLFWDA.

.....

GREAT LAKES FOUR WHEEL DRIVE ASSOCIATION

Individual Membership Application

Date: _____

Name: _____

Address 1: _____

Address 2: _____

City: _____ State: _____ Zip: _____

4WD Vehicle: _____

Phone Number: _____

Interests: Sand Drags _____ Mud Bogs _____ Trail Riding _____ Rock Crawling _____ Camping _____

Other 4WD Affiliations: _____

Send your completed application for with your check for the \$35 yearly individual dues made payable to “Great Lakes Four Wheel Drive Association” to:

Bob DeVore
8390 Cappy Lane
Swartz Creek, Michigan 48473
membershipsecretary@glfwda.org
scmidad@aol.com

Since membership entitles you to receive the “Boondocker” newsletter, please include your full mailing address.

DON'T FORGET to Check Out the Great Lakes Store at: <http://www.glfwda.org/store/> and the order form in this issue!

Inside

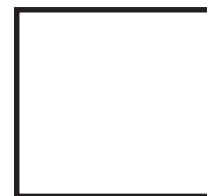
Capital Crawling
KOTARO!
M-Triangle Mapping Project
Trail Maintenance Updates
The New United



www.glfwda.org

summer 2007

Great Lakes Four Wheel Drive Assoc.
c/o Lucas Gottler
34448 Jerome
Chesterfield, MI 48047



DATED MATERIAL DO NOT DELAY

