



BOONDOCKER

2020

SnoFari 2020 West Branch Michigan

hosted by Sofo

MISSION STATEMENT

The Great Lakes Four Wheel Drive Association (GLFWDA) is the voice of full-size 4-wheel drive vehicle owners working with local and state government to keep trails open, and available for their enjoyment



Great Lakes Four Wheel Drive Association

Great Lakes Four Wheel Drive Association Incorporated is a noncommercial Association of four-wheel drive enthusiasts organized for the promotion of interest in maintaining closer contact between four-wheel drive clubs and individuals, to promote cooperation, friendship, conservation ecology, and to preserve access to public lands through wise management policies. It shall also provide a network of communication in the event of disasters or emergencies, and for the advancement of four-wheel drive awareness, the representation of four-wheel drive interests in legislative affairs, and for maintenance of fraternalism by encouraging a high standard of conduct.

GLFWDA is an incorporated association, without capital stock, chartered under the laws of the state of Michigan and is an exempt organization under section 501(c)(7) of the Internal Revenue Service Code of 1986. Its affairs are governed by the Executive Board of Directors, whose voting members are elected every two years by the directors of each member club. The officers are elected or appointed by the directors. The association is noncommercial and no one who could gain financially by the shaping of its affairs is eligible for membership on the executive board.

A bona fide interest in four wheeling is the only essential qualification for membership; ownership of a four-wheel drive vehicle is not a prerequisite. Membership is granted to anyone within the United States or Canada. Membership inquiries should be directed to the membership secretary. Inquires of a general nature should be addressed to the Correspondence Secretary or a member of the executive board. Articles for publication should be sent to the BoonDocker editor.

<p>PRESIDENT Mike Timm president@glfwda.org VICE PRESIDENT vicepresident@glfwda.org TREASURER Shelley Thompson treasurer@glfwda.org CORRESPONDENCE SECRETARY Steve Patterson secretary@glfwda.org MEMBERSHIP Paul Hittie membershipsecretary@glfwda.org</p>	<p><u>ADDITIONAL CONTACTS</u> ASSOCIATE MEMBERSHIP OPEN amsecretary@glfwda.org LAND USE COMMITTEE CHAIR Dale Strobel landuse@glfwda.org 4WD AWARENESS TRAINING OPEN training@glfwda.org TRAIL RIDE COMMITTEE CHAIR Josh Cohen trc@glfwda.org</p>	<p>BOONDOCKER EDITOR Russell Clifton editor@glfwda.org PUBLIC RELATIONS CHAIR OPEN prchair@glfwda.org WEBMASTER Kevin Bentz webmaster@glfwda.org</p>
--	--	---

Morley, MI 49
(616)-293-799



www.bundyhilloffroad.com

Jerome, MI
517-917-0493



Jeeperz Creeperz
www.jeeperz-creeperz.com

1627 Eureka Rd
Wyandotte, MI 48192
888-281-0681

sales@jeeperz-creeperz.com

Sales and installation of parts and accessories
for your off road vehicle



34834 S Townline Rd
Drummond Island, MI 49726
906-493-6799
www.drummondislandhotel.com
www.drummondislandvacationhomes.com
drummondislandhotel@alphacomm.net



The Jeep® Experts

Quadratec
www.quadratec.com
1028 Saunders Ln
West Chester, PA 19380
[1-800-743-4927](tel:1-800-743-4927)

[Ramada Grayling Hotel and Conference Center](#)
2650 I-75 Business Loop
Grayling, MI 49738



Drummond Island Resort & Conference Center
 33494 S. Maxton Rd
 Drummond Island, MI 49726
 906-493-1000



[SK Autocorrect](#)
 12891 Artesian Street
 Detroit, MI 48223
 Phone (248) 890-1380



Riverwalk Place
www.riverwalkplace.net
 Gladwin, MI



Warn Industries
www.warn.com
 13270 SE Pheasant Court
 Milwaukie, OR 97222



JCROffroad
www.jcroffroad.com
 9350 Shaver Rd
 Portage, MI
 269-353-1184



800-338-6660 • 906-643-6950 • stignace.com
www.stignace.com

All of the above businesses sponsor GLFWDA and make it possible for us to fulfill our (that includes you) work in the full-size off-road community, please support these businesses whenever possible.

Boondocker Summer 2020

President's Column

Hello Great Lakes members!

Wow. What a year. I haven't been on a trail since January. Just about every and any event (not just GLFWDA/Jeep/Trail Ride events, but literally – ANY - event) has been cancelled or rescheduled to August or later. Wow.

That said, I hope and pray that the GLFWDA family is well and surviving. But more importantly, given the size of this organization, I know some of us have lost loved ones to the C-19 virus – our hearts, comfort, and prayers go out to these folks.

SO! What has GLFWD been doing during all of this? Well, we haven't been hibernating!! Although there has not been a lot of public activity in the way of events or meetings, there never-the-less has been business that had to be handled. The EBoD (Executive Board of Directors) has been keeping up the monthly board meetings and keeping tabs on what's going on (or more appropriately, *not* going on!).

As mentioned earlier there has not been any public activity to speak of since March, so we have not had our 'road show' on the road. As of this moment our first time out for 2020 looks like the Jeep the Mac event rescheduled to October, and barring something unforeseen at this point GLFWDA is planning on being a presence again at the Annual Jeep the Mac event.

We've also tentatively scheduled our Fall Quarterly Membership Meeting for October 17 at Rocks 'n Valley Offroad Park. That will be an important meeting as we will be electing a couple EBoD positions for the next two years, President and Treasurer.

Jeep Creep, held at Riverwalk Place in Gladwin every year, is tentatively scheduled for October 23-25, but Riverwalk Place – as of this writing – has not committed to the event yet.

As far as our committee work goes it's a mixed bag. Josh Cohen, Trail Maintenance Coordinator, recently reported that trail maintenance for the second half of the summer is a "go". Clubs performing our trail maintenance have already been notified and are planning accordingly. With regard to our Land Use Committee, it has been largely dormant since the C-19 crisis hit. Dale Stroebel, our Land Use Chairperson, reports that with the C-19 crisis there is practically no focus or emphasis on any of our Land Use issues at this moment because everyone is either focused on C-19 issues, or trying to survive the crisis, or both. And the other 'big ticket' project on our plate is the Holly Oaks ORV Park. Jim Kitson, GLFWDA representative for the park, recently reported that the Park's target opening date is still this month. See "Friends of Holly Oaks ORV Park" on Facebook for additional detail.

Also, if you missed it on our FB page or on our website, there have been a couple changes in the EBoD. We have a new Treasurer, Shelley Thompson, and a new Membership Secretary, Paul Hittie.

And that's where we are at mid-summer 2020!! We are going to be sorting out the effects of the C-19 crisis for a while yet, but on the other side of the coin we're trying to get back to some kind of 'normal'!

Thanks for your support of the Association, looking forward to some serious trail time in the near future!!!

Mike Olmstead
President – GLFWDA

Treasurer's Report 2/26/20

Our trail maintenance checks from the DNR have been received and disbursed to our trail maintainers. Our insurance is up to date, bills are paid and bank accounts reconciled. To date we have not pressed forward with hiring a legal advisor or lobbyist, our Land Use Committee is instead working with legislators to see if we can find a (free) champion in Lansing to either draft legislation or attach our needs/wants/desires to an existing legislative effort.

Not related to our finances, I attended the quarterly meeting of the ORV Advisory Workgroup this past weekend. This was more of a conference setting than our usual meetings, the entire MTAC met in small groups and several times as a whole with all of the subcommittees (other advisory committees are NAW/Non-motorized, SAW/Snowmobile and ETS/Equine). It was an interesting weekend of participating, observing and listening to the processes at work in the other groups. Many of the senior trail program managers from DNR were in attendance, including PRD Director Ron Olson. I had not met him prior to this conference, he has a long background of similar projects from other states and was generally easy to talk to. During the ORVAW meeting I was able to add a discussion of full-size/SOS licensed vehicles on the Grayling Military reserve to the agenda. If you have not been following

along on social media there have been several groups stopped by law enforcement in the last couple of months. Some of the groups have been threatened with ticket for being on closed roads/trails, others were threatened with tickets for exceeding the Director's Order limit of 20 people in the woods together without a permit for their "event", and some had both threats. We asked the question last year after PA288 changed us to open unless posted closed, there was a Director's Order that closed Camp Grayling to ORV use. DNR staff said no, that did not affect licensed full-size vehicles. The statement came from the forest manager for that district, the same guy who was consulted by LEOs during some of the stops and he actually asked LEO to take the ticket back. Unfortunately, the DNR was not able to answer the question, so at this point we have no definitive answer on Camp Grayling. We do however have a definitive answer on the event permit issue as it stands today – any time you put 20 people in the woods, you need to at least notify DNR via a convenient online fillable PDF. This only affects wheeled motor vehicles, so apparently groups of snowmobilers are exempt from this process.



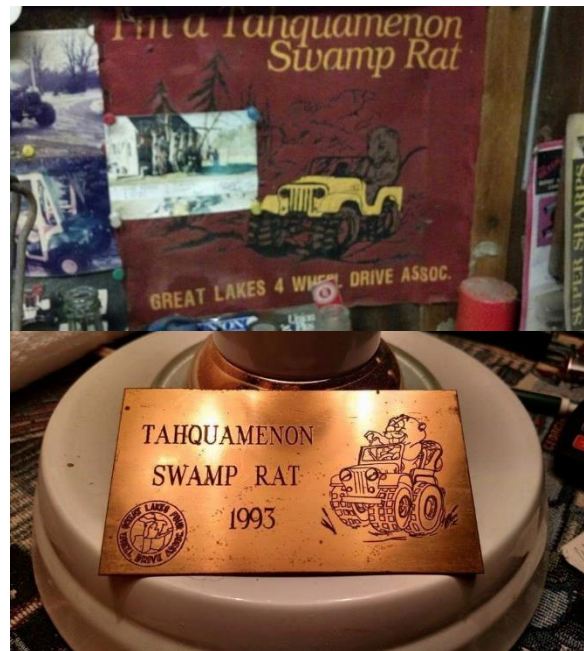
A little look at the past

I saw this on one of my social media pages a while back and thought was worth sharing with the permission of the poster. Thank you Jerome Flynn,

Note from the editor

Hello my name is Russ Clifton and I am the new editor of the "BoonDocker". I have been a member of GLFWDA for about 10 or 11 years. Way back then I had a 98 Suburban, now days I can be found cruising around in my 2004 Wrangler LJ (above). I am retired from a 44-year career with General Motors at various locations from Warren to Milford.

I must first apologize for taking so long (9 months) to get my first issue into eprint. So if you will bear with me I will try to do better next time.



Got any pictures of you and your family/group off-roading recently or in the past send them to editor@glfwda.org

The Swamp Stompers
www.swampstompers.com Cadillac Jeepers PO
Box 954 Cadillac, MI 49601 cadillacjeepers.com

Drummond Island Off Road Club 33655 S.
Townline Rd Drummond Island, MI 48726

Mid-MichiganFourwheelers Member since
1990 Director:

Ron Roggow 4125 Roosevelt Hemlock, MI
48626

Mud, Sweat, and Gears Member since 1987

www.msg4x4club.com Director:

Tim Yocum timmyocum@gmail.com

SoFO – Michigan Member since 2005 Website:
sofo.glfwda.org 31026 West Chicago Livonia, MI
48150 734.776.6072

Tri-City Trail Riders Member since 2003

Director:

Steve Gradowski 1634 Hotchkiss Rd Freeland MI
48623 nvrenuf@gmail.com

Cheap Thrills Off Road Member since 2011

www.cheapthrillsoffroad.com

Troll Fourwheelers Member since 1993 c/o

Dusty Maat 526 N. Lake St Lot #7 Boyne City, MI

49712 dmaat@hotmail.com

What Lies Beyond Jeep Club Member since

2007 PO Box 718 Flint, MI 48501

www.whatliesbeyond.org

Two Trackers Four Wheel Drive Club, Inc. PO

Box 88063 Kentwood, MI 48518-9998

www.twotrackers.com www.twotrackers.org

The Sundowners 6532 S. 26th St. Scotts, MI

49088 wrynbrand@yahoo.com

sundowners4x4.org

Great Lakes Store

Clothing, Gear & More!

LET 'EM KNOW... YOU SUPPORT THE SPORT!

We have t-shirts, sweat shirts, hats, and
fender/bumper stickers

Order Online @ www.glfwda.org/store/

To Become a Member

Contact our membership secretary by
email,

Paul Hittie at:

membershipsecretary@glfwda.org

If you own, operate, or work for a business that
might be interested in being a supporting
member of GLFWDA, then we have the deal for
you!

GLFWDA Associate Membership Information:

Associate Membership Benefits

- Your business information listed in The Boondocker, a quarterly publication of GLFWDA.
- A Certificate of Appreciation. · A GLFWDA Window Decal.
- Two (2) ID cards with your GLFWDA Associate Membership number.
- A chance to be nominated Associate Member of the Year.
- A welcome to attend all GLFWDA sponsored events.
- Company exposure to four-wheel drive enthusiasts from all over the country and all around the world through the GLFWDA website.

Why Become a Member

In unity there is strength. Great Lakes Four Wheel Drive Association is dedicated to upholding the rights of citizens, and the continued use of public lands. Public lands belong to the citizens to RESPECT, to PROTECT, and to ENJOY. If you support these principles, your membership will add your voice to the millions of other recreationists who are striving to protect their rights and freedoms. GLFWDA believes, with firm conviction, in this right and this trust. GLFWDA believes that citizens have the right of access and to enjoy these public lands, by vehicle, as well as by other means. GLFWDA recognizes that citizens who use these lands, in return have an obligation to uphold the trust-to respect the land, and so conduct their activities that the public's interests are protected. We invite the cooperation of all in upholding the right of citizens to continued use of public lands they jointly own.

We urge individual four-wheel enthusiasts to become members of Four-Wheel Drive Clubs, or to form new clubs, and to affiliate with the Association. We invite the support and participation of related businesses as supporting associate members of GLFWDA

Remember: No Trails = No Sales!

For more information, please contact our Associate membership Secretary at amsecretary@glfwda.org

The BoonDocker is the newsletter for members of Great Lakes Four Wheel Drive Association. It is published quarterly. Content for the BoonDocker is provided by association members. We would be glad to receive your articles, pictures, event dates, technical write-ups or trails from the trail. Take a few minutes to write up some highlights from your most recent club event or off-pavement excursion and be sure to include pictures! You may see your event in the next issue!

What Lies Beyond Jeep Club of Michigan invasion of Holly Oaks ORV Park



Mark Hrenyk, What Lies Beyonds president climbing Mount Magna (above) View of the east side of Mount Magna from Badgers Nest(upper right) WLB meeting up at base Camp(lower right)

What Lies Beyond Jeep Club of Michigan invaded Holly Oaks ORV Park in late September for some wheeling. After mustering up in Base Camp we headed for Mount Magna for some Utah style rock crawling. Later we tried out the Endurance Trail for two tracking and hill climbing. Then

we hit some of the other features to finish a great day of off road adventure.



Whatliesbeyond.org

Two Trackers Four Wheel Drive Club

The Two Tracker Four Wheel Drive Club out of Grand Rapids, Michigan took a week long trip touring Hollarwood offroad park in Kentucky, the Daniel Boon National Forest, and Windrock offroad park in Tennessee.

We started in Kentucky on trails we have never been on before. I did a ton of research before we left and had a few spots to check out (We didn't get to all of them). We went into Hollarwood offroad

park for maybe a 1/4 of the time we were in Kentucky, and the rest of the time we were in the National Forest. Per the locals the best trails are outside of the park, you just need to know how to get to them. We got a few hand drawn maps from the locals to some nice difficult climbs and some great caves and lookouts. Since the area is huge we weren't able to get to all of them. You could easily spend a few weeks in the area and never hit the same trail twice.

Hollarwood is a relatively new off-road park and has some tight and un-groomed trails. Actually, a few of them were freshly cut. The man behind the desk told us he just cut a few new ones, but hasn't seen anyone able to make it up yet. The trails wind in and out of "hollar's", along ridges, through and along creeks, and across some beautiful scenery. On our trip we explored a few caves, some of which seemed to go on and on. A few of them were so big we could actually fit all the rigs in them, and some we had to hike down; at least as far as we would dare.

We also ventured off into the Daniel Boone National Forest to explore a few of the "local" spots. There are lots of creek crossings, and the trails are amazing. I highly recommend some type of GPS tracking or mapping device. The trails seem to go on forever and in a couple circumstances we didn't want to try and go down what we just climbed up. We used the GPS pretty religiously to track our position and to find our way out of the woods. There is also a trail system in the area called the Daniel Boone Backcountry Byway. We didn't go on any of this trail system but have been told its very popular with the car camping (overlanding) crowd.

The area is beautiful and is really popular with the rock climbing crowd, and not only the kind that use Jeeps, but also the people that climbing them with ropes and stuff. That being said..... We never saw anyone out on the trails... ANYONE. The towns are small and everyone is really friendly. One more thing to note; while we were there the major expressway was closed in town due to a large sink hole, but for some reason we didn't think twice about exploring the caves.

Wednesday we packed up and left for Windrock in Tennessee. Its about a three hour drive on some windy roads from the Slade area. We started the day on trail 75 Walden's Ridge. We started at the bottom and worked our way to the top. Its a nice trail which isn't too challenging for a rig on bigger tires and lockers. We climbed the backside of the ridge which was a little sketchy but was a lot of fun. Since the weather was so nice we hiked to the fire tower. Its about a mile long walk but was worth it. The tower is about 120ft climb and there are a few boards missing so you have to be careful where you step. The views are great and it was awesome to check out. The next day we went to the train. Theres an old abandoned train on the top of the mountain that was originally put there to be used as a passenger train for tours. It appears it didn't really work out. The train still had oil in the motor and I'm sure if we stayed there a little longer Jeff would have had the thing fired up and ready to take on a cruise. Since we were close we also checked out the prison. The prison closed in 2009 and housed a lot of our countries worst. James Earl Ray who murdered Martin Luther King was there and the place is said to be haunted. A bonus was the Crown Royal Road Ralley was there. So we also got to see some Lambo's, McLarens, and other cool super cars. We also saw a few of them racing on the mountain roads. Sorry..... they aren't racing, they are

just driving really fast, really close together. We then hit some of the tougher trails and finished with 15 and 38 in the dark. 38 is getting really beat up. I was on that trail 5 years ago, and when I went there in the spring it was still pretty much the same. However, this time some of the really big rocks have actually moved off the mountain and the trail has changed a lot.

If you have never been to Windrock you should put it on your list. Every time I go there they are making improvements. They have nice cabins on site, and good tent camping spots as well. They have a general store with fuel on the property, and even an app for your smart phone to guide you on the trails. They monitor park safety pretty well so expect to be checked multiple times, and the crowds are usually large with tons of side by sides all over the place.

It was a great week of wheeling with the Two Trackers, we hit some tough trails and our rigs definitely took a beating. Windrock never disappoints but the Slade, Kentucky area proved to have some amazing wheeling. I liked the Slade area so much the Two Trackers are already planning their next trip.

Tony Milanowski

Two Tracker Four Wheel Drive Club





Store and pictures by Tony Milanowski
www.twotracker.org